

Notes



www.gswcf.org

WELCOME

To
Girl Scouts of
West Central Florida



Table of Contents

Girl Scout Mission	2
Girl Scout Promise & Law	3
What Girls Do!	4
What Adults Do!	5
Adult Learning	6
The Girl Scout Mission in Action	8
Council Structure	9

The Girl Scout Mission

“Girl Scouting builds girls of courage, confidence, and character, who make the world a better place.”

Nuevos Recursos en Español

Muchas de nuestras publicaciones están disponibles en Español con el fin de servirle a las niñas/jóvenes y a los voluntarios.

Si desea más información, por favor comuníquese con nosotros al (813) 281-4475, o (800) 881-4475, ext. 1761.

To view the Operational Volunteer Personnel Practices, please visit www.gsnwcf.org.

The Girl Scout Promise

On my honor, I will try:
To serve God and my country,
To help people at all times,
And to live by the Girl Scout Law.

The Girl Scout Law

I will do my best to be
honest and fair,
friendly and helpful
considerate and caring,
courageous and strong, and
responsible for what I say and do,
and to
respect myself and others,
respect authority,
use resources wisely,
make the world a better place, and
be a sister to every Girl Scout.



What Girls Do!

Girl Scout Pathways are flexible ways in which girls might participate in Girl Scouting. Girls can choose any one, all, or some of these pathways within a single year; however, different pathways are geared specifically to different grade levels.

The Girl Scout community nationwide is continuously developing a new approach to ensure that girls and adults can participate in Girl Scouting in the ways they want to!

The Girl Scout Pathways include:

Camp – Girls participate in day or resident camps with a focus on the out-of-doors and/or environmental education.

Events – Girls participate in events (e.g., career day).

Special Interest – Girls participate in a series of programs with the same group of girls relating to a specific theme or purpose (e.g., high-adventure teen group, completion of the “It’s Your World—Change It!” journey over a six-week period).

Travel – Girls plan, earn money, prepare and participate in regional, national and international trips.

Troops – Girls participate in a series of programs with the same group of girls over the course of an academic year.

Virtual – Girls participate in interactive, high-quality program activities in a safe, secure, online environment supplemented by live events.

Girls have the freedom to choose from any of the pathways to join Girl Scouting and may participate in multiple pathways within a membership year. They can explore their skills and interests while helping to shape a variety of fun and enriching leadership experiences that inspire them to reach their personal best. Girls, no matter where and how they participate, will get the necessary guidance from adult volunteers and council staff to develop leadership skills and understand how those skills can be used to make a difference in the world.



What Adults Do!

Girl Scout volunteers bring special talents and expertise that enrich the Girl Scout program for girls. Girl Scouts of West Central Florida offers flexible volunteer opportunities, recognizes the value of diversity and creates an environment in which diversity is supported and nurtured.

Volunteer opportunities at Girl Scouts of West Central Florida include:

Helping with troops – Volunteer with the same group of girls over the course of an academic year.

- Troop leader/co-leader
- Assistant leader
- Parent helper/chaperone

Events – Help facilitate events such as a career day or Webkins events.

- Activity facilitator
- Event planner

Travel – Help girls plan, earn money, prepare and participate in regional, national and international trips.

- Trip coordinator
- Fundraising

Special Interest Groups – Facilitate a series of programs with the same group of girls relating to a specific theme or purpose.

- Share your interests!

Camps/Outdoor Education –

Volunteer at day or resident camps with a focus on the out-of-doors and/or environmental education.

- Day/resident camp volunteers
- Aquatic/environmental activities

Working with Other Adults – Serve on a committee or support other adults who work with girls.

- Adult learning facilitator
- PR liaison
- Service team member
- Fund development
- Coach/mentor



Adult Learning

We are committed to making your volunteer experience a success and want to prepare you for your leadership journey. To ensure a high quality Girl Scout program for girls and a rewarding volunteer experience for adults, Girl Scouts of West Central Florida offers adult learning opportunities for all registered adult volunteers. All volunteers must complete training for appointed positions within six months of appointment.

All volunteers

The first step for all new volunteers is to complete an online orientation through GSUSA. This orientation will familiarize you with the basics of the Girl Scout movement.

- Visit <http://onlinelearning.girlscouts.org>; the password is “discover.”
- For Spanish, select the En Español link; the password is “descubrir.”
- Submit the learning log from the orientation to “orientation@gswcf.org” to receive credit for completing the orientation.

Troop leaders

After completing the online orientation, new leaders must complete the following:

- Leadership Essentials
- Traveling Troops

Dates and locations are listed on the council website, www.gswcf.org, and participants should register for all trainings on the website.

All troops must also have a First Aid/CPR certified adult, but this adult does not have to be the troop leader. Please refer to *Safety-Wise* for additional information regarding First Aid/CPR certifications and a list of accepted providers.

Additional courses offered through Girl Scouts of West Central Florida include:

First Aid and CPR – Periodic courses are set up through outside organizations as a convenience to Girl Scout volunteers. However, volunteers may complete their certifications independently through any of the providers listed in *Safety-Wise* (p. 37).

Basic Camp Training – Basic camp skills, girl planning and taking girls to camp for the first time (required for taking girls camping)

Wilderness Camp Training – Camping skills for longer and more advanced trips

Event/Encampment Director

Training – Event planning, budgeting, program, safety and logistics for volunteers who will be directing service unit or council events or encampments

Service Unit Delegate/Alternate

Training – Roles and responsibilities, council structure, policy-influencing and by-laws

Service Team Training – Service unit manager, consultant, organizer, registrar, product sale manager, Family Partnership Campaign coordinator and PR liaison

Aquatics – American Red Cross Small Craft Safety and skill building in canoe, kayak and sailing (required for doing aquatics with girls)

Archery – American Red Cross proper techniques and *Safety-Wise* checkpoints, practice proper use and care of archery equipment

Kiln Certification – stages of ceramics from greenware to glazed pieces, *Safety-Wise* checkpoints (required for using the kiln at a Girl Scout camp)

Additional adult learning courses and workshops are offered throughout the year. Please check the website for course descriptions, dates and locations.



The Girl Scout Mission in Action

Girl Scouts of West Central Florida serves nearly 30,000 girls and 10,000 adults in Citrus, Hernando, Hillsborough, Marion, Pasco, Pinellas, Polk and Sumter counties.

The council's annual operating budget provides funds for financial assistance to girls; adult volunteer recruitment and training; supplies and equipment; upkeep of five camp properties, a troop house and three offices; program resources; curriculum development and delivery; insurance; and other non-profit business expenses.

How is Girl Scouts of West Central Florida funded?

Membership fees are paid to Girl Scouts of the USA and do not benefit Girl Scouts of West Central Florida. Our mission to build girls of courage, confidence, and character is funded through the following:

- Girl Scout Cookie and fall product sale programs
- Promise Society annual giving campaign
- Family Partnership giving campaign
- Special events
- Grants and area United Way campaigns
- Conference center and facility rentals
- Girl Scout Stores

You can support Girl Scouts of West Central Florida through:

- Annual operating contributions
- In-kind gift of goods or services
- Attendance at council fundraising events
- A bequest in your will or estate plan



Council Structure

The structure of a Girl Scout Council may be divided into three broad areas, all related to policy.

WHAT IS POLICY?

A policy is an established, binding course of action to be followed.

In Girl Scouting, we follow the policies established by GSUSA*. Additionally, we are governed by the policies established by the Board of Directors of Girl Scouts of West Central Florida, Inc.

A policy defines:

- a) what shall be done
- b) what purposes shall be followed
- c) what financial procedures shall operate
- d) what personnel practices shall be
- e) what courses of action shall be taken

The structure of a Girl Scout council may be divided into three major areas:

1. Policy influencing
2. Policy making
3. Policy implementing

The **policy influencing** responsibility may be shared by the following:

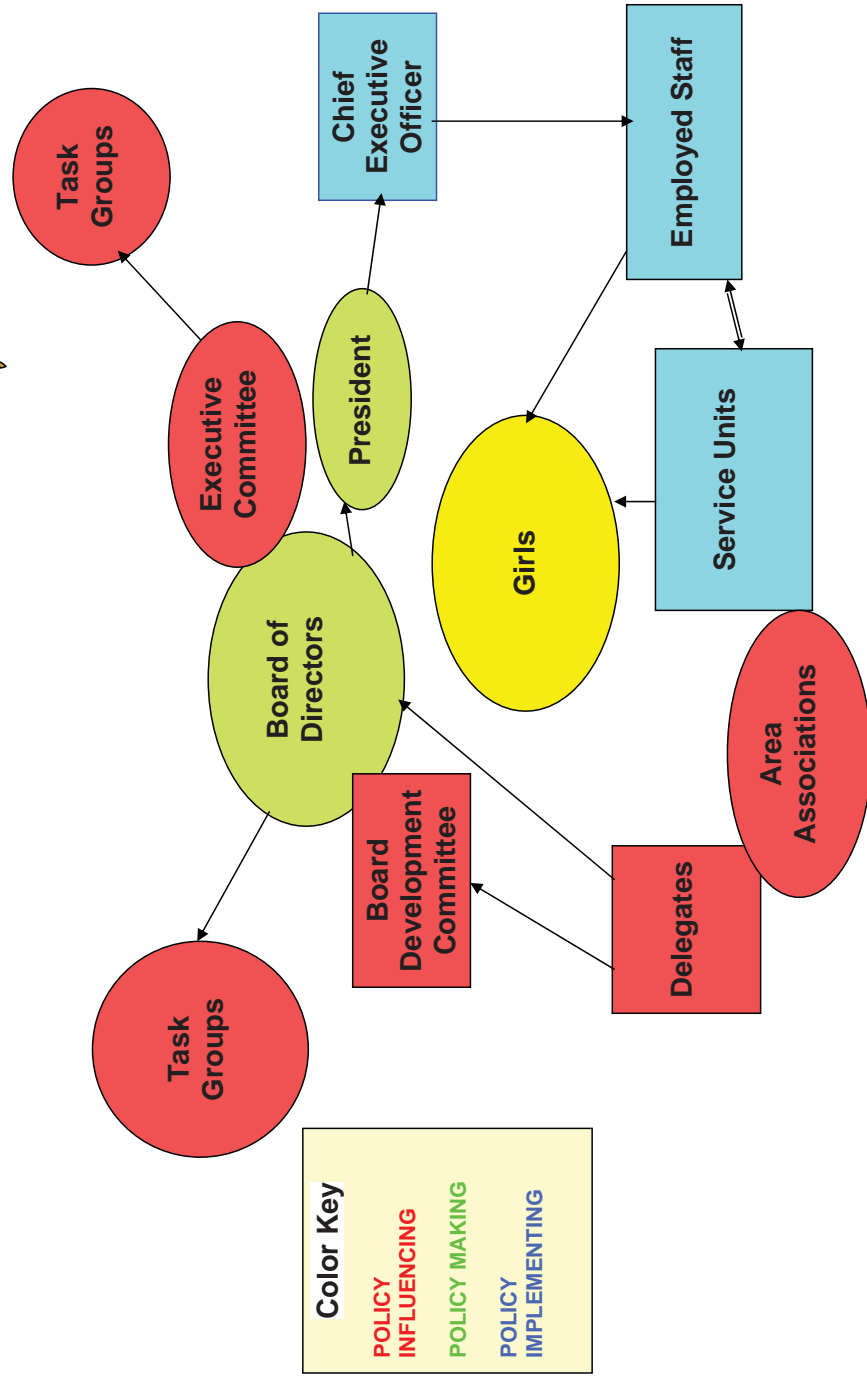
1. Service Units – elect delegates to the assembly.
2. Delegates – elect the Board Development Committee and the Board of Directors, and approve the Council By-Laws.

3. Board Development Committee – presents the slate of officers and Board members to the Delegate Assembly.
4. Board Committees and Task Groups – make policy recommendations to the Board of Directors.

The **policy making** responsibility rests solely with the Board of Directors, under the direction of the president. **ONLY THE BOARD CAN CHANGE POLICY OR VOTE EXCEPTIONS.**

The **policy implementing** responsibility is shared by both volunteer and employed staff who perform the day-to-day work of the council, under the direction of the chief executive officer, toward achieving the council's goals and objectives. The chief executive officer is accountable to the Board of Directors for administering the total operations of the council, as stated in the Council By-Laws.

**See Leader's Digest or Blue Book of Basic Documents*



Girl Scouting builds girls of courage, confidence, and character, who make the world a better place.

Tampa Service Center
 5002 W. Lemon St. / P. O. Box 18066
 Tampa, FL 33679-8066
 (813) 281-4475 • (800) 881-4475
 Fax: (813) 282-8285

www.gswcf.org