

Summer Camp 2024

Your
Year of...

Adventure

Discovery

Fun

Friendship



Girl Scouts and Girl Scout summer camps are special. When you come to Camp Indian Echo, Camp Wai Lani, or Camp Wildwood, you join a family who stands by you, encourages you, and cheers you on, whether you are one foot off the ground or 12!

You will have counselors and friends who love you for your true self and remind you that, “you are brave, you are strong, and you can do this!”

You can ride that horse, climb that wall, hit that target, row your way to victory, and so much more. Girl Scout camp is a place to go on adventures, develop new skills, build new relationships, and strengthen existing ones.

Friendships begin in Girl Scouts!

Girl Scouts of West Central Florida

Camp Wai Lani

Palm Harbor, FL

Camp Wildwood

Wildwood, FL

Camp Indian Echo,

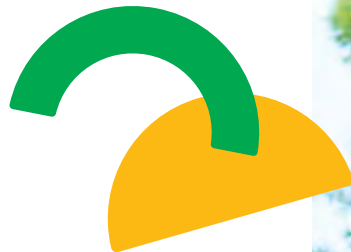
Hudson, FL

P 1-800-881-GIRL (4475)
or 813-281-GIRL (4475)

F 813-282-8285

www.gswcf.org

Connect with us @GSWCF



Important Dates

February 1

Summer camp registration opens.

February 8

Counselor-in-training (CIT) & intern applications open.

Military family discount applications open (See page 25 for details).

March 10

Summer camp open house held from 2-4 p.m. at Camp Wildwood.

March 17

Summer camp open house held from 2-4 p.m. at Camp Wai Lani.

May 13

Last day to apply for ‘campership’ financial assistance.

Campership applications are available on a first-come, first-serve basis until funds are exhausted.

May 15

Final payments for camp due.

Please Note All summer camp forms must be completed and submitted two weeks prior to the start of your camp session. Visit www.gswcf.org/summercamp to register starting February 1.



Table of Contents



<u>Healthcare Policies</u>	5
<u>Summer Camp Locations</u>	6
<u>Camp Basics</u>	8
<u>Summer Snapshot</u>	10
<u>Camp Programming</u>	12
• <u>Half-Week Camps</u>	13
• <u>Traditional Overnight Camps</u>	14
• <u>Specialty Overnight Camps</u>	16
• <u>Travel Camps</u>	19
• <u>Counselor in Training/Intern Camps</u>	20
• <u>Day Camp</u>	22
• <u>Family Weekend Camp</u>	23
<u>Registration & Payments</u>	24

Healthcare Policies

Communicable Diseases & Healthcare Policies

The safety of our campers, staff members, and volunteers is the highest priority for Girl Scouts of West Central Florida (GSWCF). Based on recommendations from the Centers for Disease Control and Prevention (CDC), Girl Scouts of the USA (GSUSA), and the American Camping Association (ACA), camp policies are updated regularly. Up-to-date protocols can be found on GSWCF's website at www.gswcf.org/summercamp. Please review the policies annually. While we are committed to keeping the camp experience as consistent and magical as possible, regulations may change throughout the year.

Health Check

In order to ensure the safety of the entire camp community and maintain a positive experience for all, campers are checked for the following during the check-in process:

- Fever of 100.4 degrees or higher
- Symptoms of any contagious condition
- Head lice or evidence of lice in any form
- Any injury or condition that needs immediate medical attention

If any of the above conditions are found, the camper will not be allowed to remain at camp.

If a camper is sent home at check-in due to a fever or symptoms of a contagious condition, she may return with a signed letter from her physician stating that she does not have a contagious condition and is in good health. In cases of head lice, a camper must wait 24-hours, be free of signs of lice or nits, and be rechecked upon her return to camp.

Arrangements to attend a later GSWCF 2024 camp session may also be made if space is available. The final decision is left to the discretion of the camp director.



GSWCF Summer Camp Locations



Camp Wai Lani, Palm Harbor, FL

Activities include: archery, arts & crafts, axe throwing,* boating, high ropes,* marine exploration, outdoor living skills, swimming

Camp Wai Lani offers programs for campers ages 6-17. Offering full-week and half-week overnight camping sessions, in addition to weeklong day camp programs, Wai Lani has something for everyone. With its location on the Gulf of Mexico, campers are able to experience the waterfront and marine-based activities along with traditional camp activities.

*Activities available to age-eligible campers



Camp Wildwood, Wildwood, FL

Activities include: archery, arts & crafts, equestrian, outdoor living skills, pioneer activities (select sessions), swimming

If a camper is interested in horseback riding, then Camp Wildwood is the camp for her! Camp Wildwood offers weeklong, overnight programs for campers ages 7-17. Campers can spend time learning how to build fires, shoot archery and swim in our pool. NEW for 2024: spend a weekend at Camp Wildwood for family camp!



Camp Indian Echo, Hudson, FL (Weekend Program)

Activities include: archery, arts & crafts, giant swing,* teambuilding course, water activities

Looking for a unique way to spend time with family this summer? Want to go camping, but aren't an expert fire builder or over-the-fire cook? Want to introduce your daughter to overnight camp, but aren't sure if she's ready? Camp Indian Echo offers a three-day, two-night weekend camping experience for your family. Bring your sleeping bag and sense of adventure; we will take care of the rest.

*Activities available to age-eligible campers

Camp Basics



Camp Wai Lani

- Open June 9-August 3
- Day Camp Sessions (Ages 6-14)
- Overnight Camp Sessions (Ages 7-17)
- Half-week Camp Options; Pick-up is on Wednesdays between 4:30-6 p.m.



Camp Wildwood

- Open June 9-July 13
- Overnight Camp Sessions (Ages 7-17)
- Half-week Camp Options; Pick-up is on Wednesdays between 4:30-6 p.m. (June 30-July 3)
- Family Weekend Camp (July 19-21)



Camp Indian Echo

- Open June 28-30
- Family Weekend Camp

Pricing

Half-Week Camps (Sun.-Wed.)	\$385 per session
Traditional Overnight Camps	\$525 per session
Specialty Overnight Camps	\$600 per session
Travel Camp	\$1,900
CIT/Intern Camps	See session for pricing
Day Camp	\$285 per session
Family Weekend Camp	\$80 per person

Camper Schedules

Sample Overnight Camper Schedule

7:15 a.m.	Rise & Shine
8 a.m.	Breakfast
8:45 a.m.	Morning Flag Ceremony
9:15 a.m.	Morning Activity Rotations
Noon	Lunch
1 p.m.	Turtle Time
2-5:30 p.m.	Afternoon Activity Rotations
5:45 p.m.	Evening Flag Ceremony
6 p.m.	Dinner
7:15 p.m.	All-Camp Activity
8:15 p.m.	Showers
9:30 p.m.	Lights Out (for younger campers)
10:30 p.m.	Lights Out (for older campers)

Sample Day Camper Schedule

8-8:45 a.m.	Camper Drop-off
8:45 a.m.	Morning Flag Ceremony
8:45-9 a.m.	Late Drop-off
9:15 a.m.	Morning Activity Rotations
Noon	Lunch
1 p.m.	Pool
2 p.m.	Afternoon Activity Rotations
5:30-6 p.m.	Camper Pick-up



Summer Snapshot

Campers must be at least age 7* by the start of their camp session. Programs are designed for girls based on their grade as of Aug. 1, 2024.

***Day camp is open to campers ages 6-14.**

Counselors-in-Training (CIT): Check-in is on Sunday between 3-5 p.m. and check-out on Saturday between 10-11 a.m. (No Saturday overnights regardless of number of sessions attending)

	Week 1 (June 9-15)	Week 2 (June 16-22)	Week 3 (June 23-29)	Week 4 (June 30- July 3)	Week 5 (July 7-13)	Week 6 (July 14-20)	Week 7 (July 21-27)	Week 8 (July 28-Aug.3)
Brownie Adventures	Wai Lani <ul style="list-style-type: none"> • Day Camp* • Adventurers • Half Week (June 9-12) • Marine Voyager Wildwood <ul style="list-style-type: none"> • Equestrian • Chopped Champions 	Wai Lani <ul style="list-style-type: none"> • Day Camp* • Adventurers • Creative Genius • Chopped Champions Wildwood <ul style="list-style-type: none"> • Equestrian • Fix-It 	Wai Lani <ul style="list-style-type: none"> • Day Camp* • Adventurers • Half Week (June 23-26) • Marine Voyager Wildwood <ul style="list-style-type: none"> • Equestrian 	Wai Lani <ul style="list-style-type: none"> • Day Camp* • Half Week (June 30-July 3) • Journeys Wildwood <ul style="list-style-type: none"> • Half Week (June 30-July 3) 	Wai Lani <ul style="list-style-type: none"> • Day Camp* • Adventurers • Marine Voyager • Creative Genius • Fix-It Wildwood <ul style="list-style-type: none"> • Equestrian • Homestead Pioneers 	Wai Lani <ul style="list-style-type: none"> • Day Camp* • Adventurers • Half Week (July 14-17) 	Wai Lani <ul style="list-style-type: none"> • Day Camp* • Adventurers • Marine Voyager • Chopped Champions 	Wai Lani <ul style="list-style-type: none"> • Day Camp* • Adventurers • Half Week (July 28-31)
Junior Explorers	Wai Lani <ul style="list-style-type: none"> • Day Camp* • Explorers • Marine Voyager • Pressed Art • Creative Genius Wildwood <ul style="list-style-type: none"> • Equestrian • Chopped Champions 	Wai Lani <ul style="list-style-type: none"> • Day Camp* • Explorers • Half Week (June 16-19) • Marine Voyager Wildwood <ul style="list-style-type: none"> • Equestrian • Fix-It 	Wai Lani <ul style="list-style-type: none"> • Day Camp* • Explorers • Marine Voyager • Chopped Champions Wildwood <ul style="list-style-type: none"> • Equestrian 	Wai Lani <ul style="list-style-type: none"> • Day Camp* • Half Week (June 30-July 3) • Journeys Wildwood <ul style="list-style-type: none"> • Half Week (June 30-July 3) 	Wai Lani <ul style="list-style-type: none"> • Day Camp* • Explorers • Half Week (July 7-10) • Marine Voyager • Fix-It Wildwood <ul style="list-style-type: none"> • Equestrian • Homestead Pioneers 	Wai Lani <ul style="list-style-type: none"> • Day Camp* • Explorers • Marine Voyager • Pressed Art 	Wai Lani <ul style="list-style-type: none"> • Day Camp* • Explorers • Half Week (July 21-24) 	Wai Lani <ul style="list-style-type: none"> • Day Camp* • Explorers • Chopped Champions
Cadette Pathfinders	Wai Lani <ul style="list-style-type: none"> • Day Camp* • Pathfinders • Sew Creative Wildwood <ul style="list-style-type: none"> • Equestrian • Chopped Champions • Travel Camp 	Wai Lani <ul style="list-style-type: none"> • Day Camp* • Pathfinders • Marine Voyager • Chopped Champions Wildwood <ul style="list-style-type: none"> • Equestrian 	Wai Lani <ul style="list-style-type: none"> • Day Camp* • Pathfinders • Sew Creative • Pressed Art Wildwood <ul style="list-style-type: none"> • Equestrian 	Wai Lani <ul style="list-style-type: none"> • Day Camp* • Half Week (June 30-July 3) • Journeys Wildwood <ul style="list-style-type: none"> • Half Week (June 30-July 3) 	Wai Lani <ul style="list-style-type: none"> • Day Camp* • Pathfinders • Fix-It Wildwood <ul style="list-style-type: none"> • Equestrian • Homestead Pioneers • Fix-It 	Wai Lani <ul style="list-style-type: none"> • Day Camp* • Pathfinders • Marine Voyager • Sew Creative • Chopped Champions 	Wai Lani <ul style="list-style-type: none"> • Day Camp* • Marine Voyager 	Wai Lani <ul style="list-style-type: none"> • Day Camp* • Pathfinders
Senior/ Ambassador Expeditioners	Wai Lani <ul style="list-style-type: none"> • Day Camp* • Expeditioners • CIT 2 (Week 1 of 2) Wildwood <ul style="list-style-type: none"> • Equestrian • Chopped Champions • CIT 2 (Week 1 of 3) 	Wai Lani <ul style="list-style-type: none"> • Day Camp* • Expeditioners • CIT 2 (Week 2 of 3) Wildwood <ul style="list-style-type: none"> • Equestrian • CIT 2 (Week 2 of 3) 	Wai Lani <ul style="list-style-type: none"> • Day Camp* • Chopped Champions • CIT 2 (Week 3 of 3) Wildwood <ul style="list-style-type: none"> • Equestrian • CIT 2 (Week 3 of 3) 	Wai Lani <ul style="list-style-type: none"> • Day Camp* • Survival Skills 	Wai Lani <ul style="list-style-type: none"> • Day Camp* • Fix-It • CIT 1 Wildwood <ul style="list-style-type: none"> • Equestrian • Fix-It 	Wai Lani <ul style="list-style-type: none"> • Day Camp* • Expeditioners • CIT 2 (Week 1 of 3) 	Wai Lani <ul style="list-style-type: none"> • Day Camp* • Pressed Art • CIT 2 (Week 2 of 3) 	Wai Lani: <ul style="list-style-type: none"> • Day Camp* • CIT 1 • CIT 2 (Week 3 of 3)
Family Weekend Camp			Indian Echo <ul style="list-style-type: none"> • Me & My Family Camp (June 28-30) 			Wildwood <ul style="list-style-type: none"> • Me & My Family Camp (July 19-21) 		

Summer Camp Programming



Half-Week Camp Options

All half-week camp options are \$385 per session.

Perhaps a week at camp is too long or you just want to give it a try! Then our half-week camps are for you. Spend four days and three nights of fun and adventure at camp. Please note that pick-up for this program is on Wednesday.

Traditional Overnight Camps

Experience all of the most popular camp activities, including swimming, boating, arts & crafts, games, and of course, campfires! Review the full camp descriptions on page 15.

Wai Lani

- **Brownie Adventurers** – Weeks 1, 3, 4, 6, 8
- **Junior Explorers** – Weeks 2, 4, 5, 7
- **Cadette Pathfinders** – Week 4

Wildwood

- **Brownie Adventurers** – Week 4
- **Junior Explorers** – Week 4
- **Cadette Pathfinders** – Week 4

Journeys

Head to camp and complete a journey in a few days. Each day, campers will work on completing the journey for their level while also participating in some of camp's most popular activities. Brownies, Juniors, and Cadettes will complete the Outdoor Journey.

Wai Lani

- **Brownie Journeys** – Week 4
- **Junior Journeys** – Week 4
- **Cadette Journeys** – Week 4

Survival Skills

Join us for this special half-week program at which you will learn survival skill basics from knife safety to using a map and compass to navigate. After learning more about shelter building, fire building, and more, Senior and Ambassador campers will participate in a survival skills challenge. Do you have what it takes?

Wai Lani

- **Seniors/Ambassadors** – Week 4

Traditional Overnight Camps

All traditional overnight camps are \$525 per session.



Adventurers

Ready for a summer adventure? Campers will jump into 'art'chery, hiking, swimming, and basic outdoor skills—all the best Girl Scout camp traditions! Tie-dye your own camp shirt, find your 'camp name,' and make new friends at Brownie Adventurers camp this summer. Adventurers will also participate in canoeing.

Wai Lani

• **Brownies** – Weeks 1, 2, 3, 5, 6, 7, 8

Explorers

Explore the wilds of camp! Campers will participate in archery, fire-building, hiking, and basic outdoor skills. All Explorers will tie-dye a camp shirt, leave with a camp name, and learn a lot of Girl Scout camp traditions! Bring your BFF and become an Explorer this summer!

Wai Lani

• **Juniors** – Weeks 1, 2, 3, 5, 6, 7, 8

Pathfinders

Find your path to adventure and new friendships at camp this summer! Pathfinders will engage in archery with both long-bows and compound bows, outdoor cooking and knife safety, a pack-out class, and a hike!

Wai Lani

• **Cadettes** – Weeks 1, 2, 3, 5, 6, 8

Expeditioners

Expeditioners will enjoy the highest level of camp programming. At camp, Expeditioners will participate in archery with moving targets, complete a challenge course with side elements, plan and cook meals over the campfire, kayak around Girl Scout Island with cast nets, and more.

Wai Lani

• **Seniors/Ambassadors** – Weeks 1, 2, 6



Specialty Overnight Camps

All specialty overnight camps are \$600 per session.

Equestrian Camp

Take the first step in expanding your skillset by learning about horsemanship: the work, dedication, and determination that is involved in taking care of a horse! Learn about the tack (equipment), the basics of riding a horse in an arena, different styles of riding, careers with horses, and more! Cadettes and up can prove their horsemanship knowledge and then tack up and hit the trails in our shady woods. When they aren't at the barn, they'll experience traditional camp activities such as archery, swimming, and crafts. Campers will receive a riding assessment and will be placed in the appropriate riding level (beginner or intermediate). Please note that some riders may be placed in riding groups with campers older or younger than they are, but will reside in age appropriate cabin groups. Any camper with a cabin mate request will be housed together but may not be in the same riding group.

Wildwood

- **All Levels** – Weeks 1, 2, 3, 5



Marine Voyager

Specifically developed for those with a strong interest in marine science, your marine explorer will be led by experienced instructors in hands-on activities. Campers will explore our Gulf of Mexico marine environment and sea life, study aquaponics and local mangroves, and so much more.

Wai Lani

- **Brownies** – Weeks 1, 3, 5, 7
- **Juniors** – Weeks 1, 2, 3, 5, 6
- **Cadettes** – Weeks 2, 6, 7

Sew Creative

Sewing newbies will learn the basics of sewing, make a traditional Girl Scout “sit-upon” pillow, and work on a fashionable project of their choice in the Camp Sewing Room.

Wai Lani

- **Cadettes** – Weeks 1, 3, 6

Pressed Art

Roll up your sleeves and let your creative side take over! Learn how to design prints, press your own screen print, and explore different types of pressed art. At the end of camp you'll take your handmade print.

Wai Lani

- **Juniors** – Weeks 1, 6
- **Cadettes** – Week 3
- **Seniors/Ambassadors** – Week 7

Creative Genius!

Nature will inspire campers as they explore, create, and design different kinds of art. Campers will create a different masterpiece each day. Some activities include pottery, sewing, making jewelry, painting, and creating recycled art. This week is all about unleashing their inner artist!

Wai Lani

- **Brownies** – Weeks 2, 5
- **Juniors** – Week 1





Chopped Champions!

Do you have what it takes to be the ultimate chef? Campers will spend the week learning to match flavors, mince vegetables, create delicious meals, and cook over campfires. At the end of the week, they'll put their skills to the test with a fast-paced mystery ingredient competition!

Wai Lani

- **Brownies** - Weeks 2, 7
- **Juniors** - Weeks 3, 8
- **Cadettes** - Weeks 2, 6
- **Seniors/Ambassadors** - Week 3

Wildwood

- **All Levels** - Week 1

Camp Fix-It

Come learn from the Camp Staff & Rangers! Campers will learn about tools, taking care of a camp property, and building maintenance. They will also build a special camp project to take home, and one that helps camp. Campers will leave with the tools needed to take on the world!

Wai Lani

- **All Levels** - Week 5

Wildwood

- **Brownies/Juniors** - Week 2
- **Cadettes/Seniors/Ambassadors** - Week 5

Homestead Pioneers

Take it back to the 1800's! You'll get familiar with the lifestyle of early settlers as you experience activities like churning your own butter, preparing meals on an antique stove, and creating corn husk dolls. You'll even get to spend a night out at the Homestead during your week at camp. (This session does not include equestrian activities.)

Wildwood

- **Brownies/Juniors/Cadettes** - Week 5



Travel Camp

Pathfinders & Explorers Travel Camp

Price: \$1,900

Get ready for an adventure you will never forget! Meet early at Camp Wildwood on Saturday and depart the same day to stay two nights at Amicalola Falls State Park Lodge in northern Georgia. You'll explore the park and head out on some hiking in the local area as it's known for its beautiful waterfalls! Then, head to basecamp at Nantahala Outdoor Center in North Carolina for the next three nights. While there, you'll learn some wilderness survival and leave-no-trace skills, go on a mountain top zip line tour, enjoy whitewater rafting (Class II-III rapids), and take a paddling tour of Lake Fontana. Then it is time to begin the journey home with a two-night stay in Sweetwater State Park. You'll enjoy some rest in a yurt and do some final chill activities before arriving back at camp. Caregiver pick up time will be at 6 p.m.

All lodging is in air-conditioned facilities. Meals are a combination of campfire prepared, catered/to-go meals, and dining out at establishments. Specialized outdoor equipment and advanced outdoor skills are not needed to attend. Campers should be comfortable with traveling, have basic experience with outdoor activities and camping, and be open to high-adventure experiences.

The cost of the trip includes transportation during the trip, meals, lodging, activities, and staffing by trained and/or certified camp staff as well as guides (as needed). Cost does not include discretionary spending money that may be sent with the camper.

Wildwood

- **Cadettes/Seniors** - Departs Saturday, June 8, 2024



Counselors-in-Training (CIT) & Interns

Calling all future camp counselors! If you are ready to unlock your leadership potential and inspire young campers with your love of the outdoors, start working towards your Counselors-in-Training (CIT) Award.

NEW For 2024 – Entry into our CIT and intern programs are based on the completion of an application and interview with the camp director and are not guaranteed. Space is limited. Upon successful admittance to the program, CIT 1, CIT 2, and interns will receive registration instructions. Applications open February 8.



Counselors-in-Training 1 (Ages 15-17)

Price: \$150

In Counselors-in-Training 1 (CIT 1), you'll gain practical experience facilitating camp programs, learning how the summer camp operates, and serve as the fun camp guide to our youngest campers. The CIT 1 program is for campers who are ready for leadership and responsibility at camp.

Counselors-in-Training 2 (Ages 16-17*)

Price: \$300

In Counselors-in-Training 2 (CIT 2), you will be hands-on in developing and facilitating activities for campers, rotating between archery, challenge courses, program areas, and adventure activities. CIT 2's can choose to take one of our specialty tracks, including a focus on the equestrian, general programming, challenge course, or waterfront programs. Advance your leadership style and discover the rewards of being a camp counselor! This is a three-week program, but you get to go home over the weekends!

- Camp session is three weeks; no overnight stay on Saturdays allowed
- Completion of CIT 1 is a prerequisite for CIT 2

*Participants under the age of 16 who completed the CIT 1 program in the summer of 2023 are eligible to participate in CIT 2

Camp Interns (Age 17)*

Price: Free; registration and application required.

Camp interns spend their time at summer camp focusing on a specific program area of interest, having an active role in the units, and learning how camp is run. Admission is based on application submission and camp director interview.

- Camp session is two weeks; no overnight stay on Saturdays allowed
- Successful completion of CIT 1 and CIT 2, as well as earning both the CIT 1 and CIT 2 awards are prerequisites for the intern program.

*Participants under the age of 17 who completed the CIT 1 and CIT 2 programs in, or prior to, the summer of 2023, are eligible to participate as a camp intern.

Day Camps

Day Camp

Price: \$285 per week

Day camp is the place to learn something new, have adventures, and make new friends! All day campers will craft, swim, hike, and participate in age-appropriate adventure & water activities. First-time campers begin building confidence and agency away from home, while returning campers serve as guides to our new friends in experiencing the camp magic! Perfect for those who are not yet ready for overnight camping! Drop-off is between 8 and 9 a.m. and pick-up is between 4:30 and 6 p.m.

Wai Lani

Ages 6-14 – Weeks 1, 2, 3, 5, 6, 7, 8



Family Weekend Camps



Family Weekend Camping

Price: \$80 per person

Come relax, unwind, and connect as a family at camp. Take part in camp activities, led by staff, including archery, nature hikes and swim time. In addition to group family activities, you can also take advantage of special child-only* and adult-only activity sessions. This three day, two night camp includes all meals, snacks and activities. Be sure to bring money with you if you would like to go shopping at the camp retail store (i.e. trading post)! All ages are welcome. Girl Scout membership is required for all adults and campers in kindergarten through grade 12. Siblings are welcome and do not require a membership. Weekend family camp check-ins are on Fridays from 3-6 p.m. and check-out is on Sunday by 12 p.m.

Indian Echo

June 28-30

Wildwood *

July 19-21

*Equestrian Add-On: Available at Wildwood only; an additional \$15 per person.

Come out to the barn and join us for some horseback riding. Available to participants in kindergarten and older. Please note that riders must be accompanied by an adult.



Registration & Payments

Registration Deadlines

To attend summer camp, registration must be received at least TWO weeks prior to the start of the requested camp program. However, please be mindful that many popular camp weeks develop waiting lists early in the year. Our programs are first-come, first-served.

If you plan to take advantage of a discount, you must register by the discount deadlines (see below).

Payments:

A non-refundable deposit is required for each camp session. The deposit for day, half-week, and family camps is \$25 per session. The deposit for overnight camp is \$50 per session. The deposit for travel camp is \$100 per travel session.

Payments can be made on camp balances in any amount, at any time, up until the deadline. All camps balances must be paid in full by May 15, 2024. Failure to pay in full will result in the forfeit of the deposit and your participation in the camp session.

All registrations made after May 15, 2024 will require payment in full upon submission.



Let Cookies Pay Your Way to Camp!

Did you know that girls can use the council money they earn through the council's product program (Sweets & Treats and Girl Scout Cookie Program) to help pay for camp?

Whether it's Council Dough or Council Credit, those vouchers can be applied to some, most, or all of your camp costs, or toward items at the camp retail store (i.e., trading post)!

What about Camp Bucks?

If you are planning on using Camp Bucks to offset the cost of your camp registration, be sure to register early and pay your deposit to save your spot. Once Camp Bucks have been issued, they will be applied to your camp balance. Your deposit will be refunded if your Camp Bucks cover the cost of camp in full! Camp Bucks aren't just to pay for summer camp. They can also be used to pay for a family weekend camp or a camp care kit for your camper.

Military Discount

We are pleased to offer a military discount of \$100 off any one session. The military discount is offered to campers who have a parent/guardian serving active duty in the United States military. To use this discount, please contact info@gswwf.org prior to registration. You must submit proof of duty status (usually military orders). Do not send a copy of a military ID.

Financial Assistance

“Camperships” are available on an as-needed basis for registered Girl Scouts of West Central Florida whose financial circumstances might otherwise prevent them from attending camp. In order to apply for assistance, you must register and pay a deposit to hold your camper’s spot in a session. Then, apply for camperships online at gswcf.org/summercamp. Deposits will be refunded if the scholarship amount is not sufficient to meet your needs. Financial assistance applications will be reviewed starting **February 5, 2024**. If your family is unable to pay the initial deposit, please contact us at info@gswcf.org to discuss alternative options.

Cancellations and Refunds:

Requests for session transfers (space permitting) and cancellations must be made through an email to info@gswcf.org three weeks prior to the session in order to be completed and/or receive a refund, less the deposit. No refunds will be offered within two weeks prior to the start of the session unless: canceled by GSWCF, the camper is required to attend summer school (notice from school required), or due to illness (physician’s note is required). We do not offer refunds for no-shows or campers leaving camp early due to behavior, homesickness or health issues. Refunds are not offered for campers arriving at camp with head lice. Refunds due to cancellation of sessions by GSWCF due to communicable diseases will be provided as follows: if a camp session is cancelled before Tuesday at midnight, a full refund will be provided. If a camp session is cancelled Wednesday or later, a 50% refund will be provided. This policy only applies in instances in which communicable disease outbreaks require GSWCF to cancel sessions or send campers home.

Have additional questions? Contact us at info@gswcf.org, call 1-800-881-GIRL (4475), or visit us online for more FAQs at gswcf.org/summercamp.





girlscouts

of west central florida

4610 Eisenhower Blvd.

Tampa, FL 33634

gswcfc.org



Choose your Camp Session Today!
gswcfc.org/summercamp

NON-PROFIT ORG
US POSTAGE
PAID
TAMPA, FL
PERMIT NO 1049